

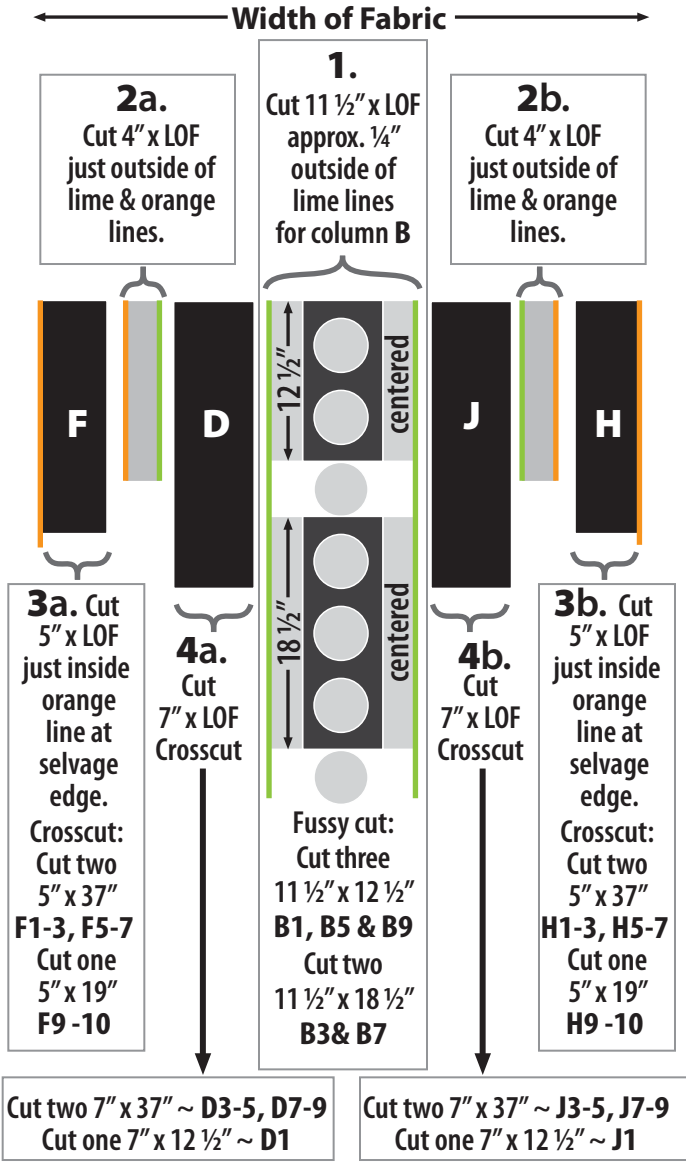
# PANEL PLAID

Susan Rooney patterns

QUEEN SIZE QUILT 84" X 105" WITH 12" DROP & TUCK

## CUTTING CHARTS:

3 yards of Panel = Length of Fabric (LOF)



column i	i3	i7	i1	i5	i9
Black/Ivory Dot	$8\frac{1}{2}$ " x $18\frac{1}{2}$ "	$8\frac{1}{2}$ " x $18\frac{1}{2}$ "	$8\frac{1}{2}$ " x $12\frac{1}{2}$ "	$8\frac{1}{2}$ " x $12\frac{1}{2}$ "	$8\frac{1}{2}$ " x $12\frac{1}{2}$ "
5/8 yard Directional	Cut two $8\frac{1}{2}$ " x $18\frac{1}{2}$ " Cut three $8\frac{1}{2}$ " x $12\frac{1}{2}$ "				

column C	C3	C7	C1	C5	C9
Black/Lime Dot	$8\frac{1}{2}$ " x $18\frac{1}{2}$ "	$8\frac{1}{2}$ " x $18\frac{1}{2}$ "	$8\frac{1}{2}$ " x $12\frac{1}{2}$ "	$8\frac{1}{2}$ " x $12\frac{1}{2}$ "	$8\frac{1}{2}$ " x $12\frac{1}{2}$ "
5/8 yard Directional	Cut two $8\frac{1}{2}$ " x $18\frac{1}{2}$ " Cut three $8\frac{1}{2}$ " x $12\frac{1}{2}$ "				
			7" x $8\frac{1}{2}$ "	7" x 7"	7" x 7"
			Cut one 7" x $8\frac{1}{2}$ " - i6 Cut two 7" x 7" - B6 & D6		

row 6	G6	A6	C6	J6
Lime Dot	7" x $16\frac{1}{2}$ "	7" x $12\frac{1}{2}$ "	7" x $8\frac{1}{2}$ "	7" x 7"
1/2 yard Directional	Cut one 7" x $16\frac{1}{2}$ " Cut one 7" x $12\frac{1}{2}$ " Cut one 7" x $8\frac{1}{2}$ " Cut one 7" x 7"			

row 6	E6
Lime Basketweave Fat Quarter	6 $\frac{1}{2}$ " x 7"
Directional	Cut one 6 $\frac{1}{2}$ " x 7" - E6 Cut two 2 $\frac{3}{4}$ " x 7" - piece with B6

row 2&8	E2	E8	row 4&10	E4	E10
Royal Basketweave Fat Quarter	6 $\frac{1}{2}$ " x 7"		6 $\frac{1}{2}$ " x 7"		
Directional	Cut two 6 $\frac{1}{2}$ " x 7" Cut four 2 $\frac{3}{4}$ " x 7" with B2 & B8		Cut two 6 $\frac{1}{2}$ " x 7" Cut four 2 $\frac{3}{4}$ " x 7" with B4 & B10		

column A	Black/Multi Floral	3/4 yard
	Cut two $12\frac{1}{2}$ " x WOF	
	Crosscut: two $12\frac{1}{2}$ " x $18\frac{1}{2}$ " ~ A3 & A7	
	three $12\frac{1}{2}$ " x $12\frac{1}{2}$ " ~ A1, A5 & A9	

column G	Ivory/Multi Floral	1 yard
	Cut two $16\frac{1}{2}$ " x WOF	
	Crosscut: two $16\frac{1}{2}$ " x $18\frac{1}{2}$ " ~ G3 & G7	
	three $16\frac{1}{2}$ " x $12\frac{1}{2}$ " ~ G1, G5 & G9	

column E	Ivory Basketweave	5/8 yard	Directional		
	E3	E7	E1	E5	E9
	$6\frac{1}{2}$ " x $18\frac{1}{2}$ "	$6\frac{1}{2}$ " x $18\frac{1}{2}$ "	$6\frac{1}{2}$ " x $12\frac{1}{2}$ "	$6\frac{1}{2}$ " x $12\frac{1}{2}$ "	$6\frac{1}{2}$ " x $12\frac{1}{2}$ "
	Cut two $6\frac{1}{2}$ " x $18\frac{1}{2}$ " Cut three $6\frac{1}{2}$ " x $12\frac{1}{2}$ "				

row 2&8	G2	B2	D2	F8	B8	J2	H8
Black/Royal Dot	7" x $16\frac{1}{2}$ "	7" x 7"	7" x 7"	7" x 5"	7" x 7"	7" x 7"	7" x 5"
1/2 yard Directional	Cut one 7" x $16\frac{1}{2}$ " Cut four 7" x 7" Cut two 7" x 5"						

row 2&8	G8	A2	A8	C2	i2	C8	i8
Royal Dot	7" x $16\frac{1}{2}$ "	7" x $12\frac{1}{2}$ "	7" x $12\frac{1}{2}$ "	7" x $8\frac{1}{2}$ "	7" x $8\frac{1}{2}$ "	7" x $8\frac{1}{2}$ "	7" x $8\frac{1}{2}$ "
1/2 yard Directional	Cut one 7" x $16\frac{1}{2}$ " Cut two 7" x $12\frac{1}{2}$ " Cut four 7" x $8\frac{1}{2}$ "						

row 4&10	G10	B4	D10	F4	B10	J10	H4
Black/Teal Dot	7" x $16\frac{1}{2}$ "	7" x 7"	7" x 7"	7" x 5"	7" x 7"	7" x 7"	7" x 5"
1/2 yard Directional	Cut one 7" x $16\frac{1}{2}$ " Cut four 7" x 7" Cut two 7" x 5"						

row 4&10	G4	A4	A10	C4	i4	C10	i10
Teal Dot	7" x $16\frac{1}{2}$ "	7" x $12\frac{1}{2}$ "	7" x $12\frac{1}{2}$ "	7" x $8\frac{1}{2}$ "	7" x $8\frac{1}{2}$ "	7" x $8\frac{1}{2}$ "	7" x $8\frac{1}{2}$ "
1/2 yard Directional	Cut one 7" x $16\frac{1}{2}$ " Cut two 7" x $12\frac{1}{2}$ " Cut four 7" x $8\frac{1}{2}$ "						