

# PANEL PLAID

QUEEN SIZE 84" X 105" WITH 12" DROP & TUCK



Brush Dance Panel - 3 yards



**column  
A**

Black/Multi Floral - 3/4 yard



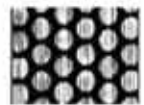
**column  
G**

Ivory/Multi Floral - 1 yard



**column  
E**

Ivory Basketweave  
5/8 yard *Directional*



**column  
i**

Black/Ivory Dot  
5/8 yard *Directional*



**column  
C**

Black/Lime Dot  
5/8 yard *Directional*

KITS:	One	12	24	36
<b>Brush Dance Panel</b> 6168 -12 Black/Multi	3 yards 1 bolt	36 yards 3 bolts	72 yards 5 bolts	108 yards 8 bolts
<b>Column A: Floral</b> 6169 12 Black/Multi	3/4 yard 1 bolt	9 yards 1 bolt	18 yards 2 bolts	27 yards 2 bolts
<b>Column G: Floral</b> 6169 09 Ivory/Multi	1 yard 1 bolt	12 yards 1 bolt	24 yards 2 bolts	36 yards 3 bolts
<b>Column E:</b> <b>Basketweave</b> 6171 09 Ivory/Multi	5/8 yard 1 bolt	7 1/2 yards 1 bolt	15 yards 2 bolts	22 1/2 yards 2 bolts
<b>Column i: Dot</b> 6172 09 Black/Ivory	5/8 yard 1 bolt	7 1/2 yards 1 bolt	15 yards 2 bolts	22 1/2 yards 2 bolts
<b>Column C: Dot</b> 6172 44 Black/Lime	5/8 yard 1 bolt	7 1/2 yards 1 bolt	15 yards 2 bolts	22 1/2 yards 2 bolts
<b>Row 6: Dot</b> 6172 40 Lime	1/2 yard 1 bolt	6 yards 1 bolt	12 yards 1 bolt	18 yards 2 bolts
<b>Row 4 &amp; 10: Dot</b> 6172 54 Black/Teal	1/2 yard 1 bolt	6 yards 1 bolt	12 yards 1 bolt	18 yards 2 bolts
<b>Row 2 &amp; 8: Dot</b> 6172 55 Black/Royal	1/2 yard 1 bolt	6 yards 1 bolt	12 yards 1 bolt	18 yards 2 bolts
<b>Row 4 &amp; 10: Dot</b> 6172 50 Teal	1/2 yard 1 bolt	6 yards 1 bolt	12 yards 1 bolt	18 yards 2 bolts
<b>Row 2 &amp; 8: Dot</b> 6172 56 Royal	1/2 yard 1 bolt	6 yards 1 bolt	12 yards 1 bolt	18 yards 2 bolts
<b>Basketweave</b> 6171 Row 6 - 44 Lime Row 2 & 8 - 54 Teal Row 4 & 10 - 55 Royal Binding - 50 Teal/Lime	Fat Quarter Fat Quarter Fat Quarter 3/4 yard 1 bolt	3 yards 3 yards 3 yards 9 yards 1 bolt	6 yards 6 yards 6 yards 18 yards 2 bolts	9 yards 9 yards 9 yards 27 yards 2 bolts

1 bolt each



**row  
2&8**

Black/Royal Dot  
1/2 yard *Directional*



**row  
4&10**

Black/Teal Dot  
1/2 yard *Directional*



**row  
2&8**

Royal Dot  
1/2 yard *Directional*



**row  
4&10**

Teal Dot  
1/2 yard *Directional*

Backing & Batting  
94"x 116"



**row  
2&8**

Royal Basketweave  
Fat Quarter *Directional*



**row  
4&10**

Teal Basketweave  
Fat Quarter *Directional*



**row  
6**

Lime Dot  
1/2 yard *Directional*



**row  
6**

Lime Basketweave  
Fat Quarter *Directional*

Binding - 3/4 yard



Teal/Lime  
Basketweave



susanrooneypatterns.com

585.425.2464 Fairport New York

©2015 Susan Rooney All rights reserved. Written permission from Susan Rooney Design is required to copy and/or distribute copies of these pages, whether or not you profit from it. Thank you for respecting designer's copyright. My sincere gratitude to Liz Trimble for helping create this quilt & Karen Kiener for quilting it. This free pattern entitles you to make as many "Panel Plaid" quilts for your personal use, including to give as gifts. This pattern also entitles you to make up to 12 (twelve) quilts per year to sell. If you are interested in selling larger volumes, please write or call for information on licensing. Info at [www.susanrooneypatterns.com](http://www.susanrooneypatterns.com).

Item # BDQfree